

Solar Storage Container Solutions

**Where is the base station
communication equipment built
in the house**



Overview

How do base stations work?

Base stations use antennas mounted on cell towers to send and receive radio signals to and from mobile devices within their coverage area. This communication enables users to make voice calls, send texts, and access data services, connecting them to the wider world. Network Management and Optimization.

What are base stations & cell towers?

Base stations and cell towers are critical components of cellular communication systems, serving as the infrastructure that supports seamless mobile connectivity. These structures facilitate the transmission and reception of signals between mobile devices and the wider network, enabling voice calls, text messages, and data services.

What is a base station in a cellular network?

Base Stations A base station, often housed within a cell site, is the central point in a cellular network where signals are transmitted and received from mobile devices. It consists of electronic equipment, including transceivers, antennas, and signal processors, that manage the communication within a specific geographical area or “cell.”.

What is a base station?

What is Base Station?

A base station represents an access point for a wireless device to communicate within its coverage area. It usually connects the device to other networks or devices through a dedicated high bandwidth wire of fiber optic connection. Base stations typically have a transceiver, capable of sending and receiving wireless signals;.

What is a signal transmission & reception base station?

Signal Transmission and Reception Base stations use antennas mounted on cell towers to send and receive radio signals to and from mobile devices within their coverage area. This communication enables users to make voice calls, send texts, and access data services, connecting them to the wider world.

What are the different types of base stations?

Some basic types of base stations are as follows: Macro-base stations are tall towers ranging from 50 to 200 feet in height, placed at strategic locations to provide maximum coverage in a given area. Those are equipped with large towers and antennas that transmit and receive radio signals from wireless devices.

Where is the base station communication equipment built in the ho



FREQUENTLY ASKED QUESTIONS ON HEALTH AND ...

Oct 15, 2023 · A base station (commonly known as a mast) is a transmission and reception station in a fixed location, consisting of one or more receive/transmit antenna and microwave ...

What is a base station ?_Premier Cable

A base station, that is, a public mobile communication base station, is a form of radio station, which refers to a radio transceiver station that transmits information with mobile phone ...



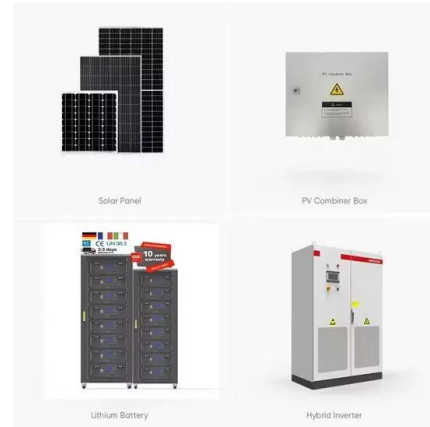
5G RAN Architecture: Nodes And Components

Jan 24, 2023 · 4. Base Station Base Station (BS) is a key component of the 5G Radio Access Network (RAN) architecture that serves as an access point for wireless connections between ...

What Is the Role of a Base Station in Wireless Communication?

Jun 27, 2025 · Introduction to Base Stations in Wireless Communication Base stations are

critical components in wireless communication networks, serving as the intermediary between mobile ...



Base stations and mobile networks

Each base station has a cabinet with equipment to provide the power. A mobile network is made up of many base stations that each provide coverage in its surrounding area. A base station is ...



Introduction of base station and Remote Radio Unit

Base Station, generally refers to the public mobile communication base station, the base station is used to provide signals to mobile phones. It usually consists of four parts. Antennas are used ...



What is Telecommunication Base Station , China Hop

Most base stations still do not require specialized tower construction, they can be built directly on existing rooftops. Usually, when you see a row of vertically inclined plate-like objects on the ...



The Importance Of Radio Base Stations In Modern Communication ...

Aug 6, 2025 · In the world of modern communication systems, radio base stations play a crucial role in ensuring the seamless transmission of data, voice, and video signals between mobile ...



A Field Guide to American Communications ...

Apr 30, 2023 · These are easy to build, easy to climb, and provide plenty of space for installing equipment. Suburban tower base station installations are usually ...

Communication base station

Dec 23, 2024 · Nevertheless, they still have lingering fears of base station radiation and are trapped in a contradictory state of both needing signals and resisting base stations. The ...

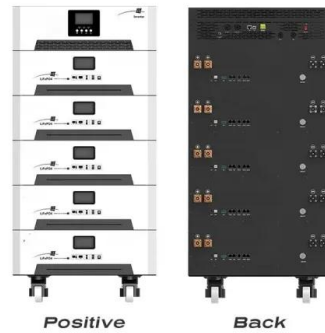


Base Stations and Cell Towers: The Pillars of ...

May 16, 2024 · Base stations and cell towers are critical components of cellular communication systems, serving as the infrastructure that supports seamless ...

Radio Base Stations for Secure Communication

Discover BelFone's advanced radio base stations designed for reliable, scalable, and secure communication. Perfect for public safety, industrial, and enterprise use, BelFone's solutions ...



Introduction of base station and Remote Radio Unit

Base Station, generally refers to the public mobile communication base station, the base station is used to provide signals to mobile phones. It usually consists of four parts.

The Base Station in Wireless Communications: The Key to ...

Aug 7, 2024 · Base station, also known as BTS (Base Transceiver Station), is a key device in wireless communication systems such as GSM. Equipped with an electromagnetic wave ...



Cell sites and cell towers in a mobile cellular ...

Nov 17, 2019 · These cells are created by the radiations from the cell towers owned by mobile operators. Our cellular service providers employ various 2G, ...

Contact Us

For catalog requests, pricing, or partnerships, please visit:
<https://chrisnell.co.za>