

Solar Storage Container Solutions

Spi photovoltaic inverter



Overview

SPI series is a solar hybrid inverter integrating solar energy storage, mains charging energy storage, and AC sine wave output. What is SPI series solar inverter?

Time-slot function to save cost with peak-valley. SPI series is a solar hybrid inverter integrating solar energy storage, mains charging energy storage, and AC sine wave output. It adopts DSP control and state-of-art control algorithm, ensuring high response speed, high reliability, and high industrialization standards.

How many charging modes does a SPI inverter have?

This SPI inverter has 4 charging modes: Solar Only, Mains Priority, Solar Priority, and Mains & Solar Charging. And there are 2 output modes, Inverter and Mains Power, to give you seamless power supply. With time-slot charging and discharging setting function, this inverter can help to save on your electricity bills.

What is the maximum PV input current for a solar inverter?

A maximum PV input current of 18+18A is perfect for high power modules. This SPI inverter has 4 charging modes: Solar Only, Mains Priority, Solar Priority, and Mains & Solar Charging. And there are 2 output modes, Inverter and Mains Power, to give you seamless power supply.

What is a SPWM inverter & how does it work?

And there are 2 output modes, Inverter and Mains Power, to give you seamless power supply. With time-slot charging and discharging setting function, this inverter can help to save on your electricity bills. SPWM technology ensure high quality pure sine wave AC power output.

How does a solar inverter work?

With support for dual solar inputs and the ability to simultaneously track the

maximum power of both solar sources, this system maximizes your solar energy efficiency. This versatile inverter operates at 110V/240V split phase, offering four adjustable voltage levels per phase: 100Vac, 105Vac, 110Vac, and 120Vac.

How efficient is the spi-10k-up solar charge controller?

The SPI-10K-UP features two built-in 200Amp MPPT solar charge controllers, each boasting an impressive 99.9% efficiency and a maximum PV input of 22A in a single circuit. With support for dual solar inputs and the ability to simultaneously track the maximum power of both solar sources, this system maximizes your solar energy efficiency.

Spi photovoltaic inverter



10KW 48V DC to 110/240V AC Solar Hybrid Inverter Split ...

This versatile inverter operates at 110V/240V split phase, offering four adjustable voltage levels per phase: 100Vac, 105Vac, 110Vac, and 120Vac. It supports CAN, USB, and RS485 ...

KEHUA TECH SPI-B X2 SERIES USER MANUAL Pdf Download

View and Download KEHUA TECH SPI-B X2 Series user manual online. PV Grid-tied Inverter. SPI-B X2 Series inverter pdf manual download. Also for: Spi30k-b x2, Spi33k-b x2, Spi36k-b ...



KEHUA TECH SPI-B2S SERIES USER MANUAL Pdf Download

View and Download KEHUA TECH SPI-B2S Series user manual online. PV Grid-Connected Inverter. SPI-B2S Series inverter pdf manual download. Also for: Spi1500-b2s, Spi2000-b2s, ...

Sunlink Spi-8K-U 8kw High Efficiency Sine Wave off Grid ...

...

Jul 25, 2024 · Sunlink Spi-8K-U 8kw High Efficiency Sine Wave off Grid Solar System

Photovoltaic Inverter All in One Inverter, Find Details and Price about Inverter Solar Inverter ...



KEHUA TECH SPI-B-H SERIES USER MANUAL Pdf Download

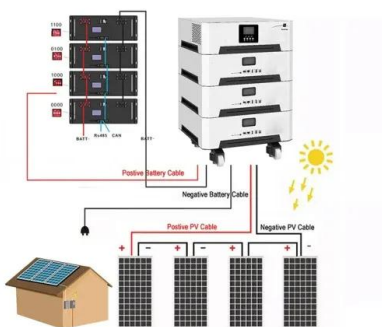
PV Grid-tied Inverter SPI-B-H Series (320K-350K)
User Manual 6 Stop Running, Dismantle, Discard
Inverter 6.2 Dismantle the Inverter After the
connection among inverter and grid and ...

Suntao Solar , SD MPI& SPI Series 3~10kW , ?????

Shenzhen Shundao Photovoltaic Technology Co.,
Ltd (Suntao Solar) ?????SD MPI& SPI Series
3~10kW?. ?????????????????,????????PDF??

Support any customization

Inkjet Color label LOGO



PV Inverter Design Using Solar Explorer Kit (Rev. A)

Apr 1, 2023 · ABSTRACT This application report goes over the solar explorer kit hardware and explains control design of Photo Voltaic (PV) inverter using the kit.

?????

Aug 7, 2023 · Summaries Thank you for choosing the PV grid-tied inverter (hereinafter referred to as inverter)! This document gives a description of the inverter, including appearance, features, ...



SPI 3000-22000 , Water Pump Inverter , Growatt

SPI series water pump inverter is used to convert the DC power from the solar panel to a single or three phases AC power and then drives motors to draw water from deep wells, rivers, lakes ...

Contact Us

For catalog requests, pricing, or partnerships, please visit:
<https://chrisnell.co.za>