

## Solar Storage Container Solutions

# How big is the 220v inverter



## Overview

---

Before we go any further, we highly recommend that you choose a pure sine wave inverter. This type of inverter delivers high-quality electricity, similar to your utility company. This way, none of your appliances run the risk of being damaged. Now, when it comes to sizing your inverter, you.

We have summarized the appliances that inverters from 300W to 3000W can run depending on their rated maximum power. Note to our readers: Use the above formula to determine.

What are the different solar inverter sizes?

Solar generators range in size from small generators for short camping trips to large off-grid power systems for a boat or house. Consequently, inverter sizes vary greatly. During our research, we discovered that most inverters range in size from 300 watts up to over 3000 watts. In this article, we guide you through the different inverter sizes.

What is inverter size?

Inverter size is measured in watts (W) and depends on two key specs: \*

Important: Your inverter must cover both the total running watts of all devices plus the highest surge wattage of any single appliance.

3. Step-by-Step: How to Calculate Your Inverter Size Include: Home: Fridge, lights, TV, microwave, AC.

How do I choose the right inverter size?

Here is our last bit of advice on how to select the correct inverter size: Check our inverter size chart. List all your appliances in the function of their power output. Apply our inverter size formula. Do not exceed 85% of your inverter's maximum power continuously. Oversize your inverter for extra appliances in the future.

Why does inverter size matter?

1. Introduction: Why Inverter Size Matters An inverter converts DC power (from batteries or solar panels) into AC power (for household appliances).

Picking the wrong size can lead to:.

How much power does an inverter need?

The continuous power requirement is actually 2250 but when sizing an inverter, you have to plan for the start up so the inverter can handle it. Third, you need to decide how long you want to run 2250 watts. Let's say you would like to power these items for an eight-hour period.

What size cable do I need for a 3500W inverter?

For inverters rated up to 3500W, the cable size should be 1/0 AWG, sufficient to handle the startup and continuous current required. Another consideration is the inline fuse, as this will protect both sides of the system in the event of a shortage in the system. To ascertain the fuse you need, divide the AC wattage by the DC Voltage.

## How big is the 220v inverter



### Advice on selecting an inverter - Sinetech

It is definitely advantageous to use a pure sinewave inverter as a pure sinewave inverter can basically run any type of equipment in contrast to a modified sinewave / step square wave ...

## How to Choose the Right Inverter Size for Your ...

Jul 14, 2023 · Popular Inverter Sizes for Fridges and Their Capabilities When it comes to choosing the right inverter size for your fridge, it's essential to ...



### What is the size of an Inverter 220V TO 12V?

First off, let's talk about what a 220V to 12V inverter actually does. Simply put, it converts electrical power from a 220V AC (alternating current) source to a 12V DC (direct current) ...

## What size inverter do I require?

Apr 26, 2023 · Inverter related, again, same story, it would need to cater for that single pull 12kw, single is fine, if it is big enough, will multi mppts. Two in parallel also good I guess, gives

more ...



## HOW TO BUILD A 220V DC INVERTER UPS CIRCUIT

How big an inverter should I use for a 300w solar panel For a 300 watt solar panel, you need anywhere between 500-1500 watt capacity inverter. However, the exact size you need will ...

## How to Make 3.7 to 220v Mini Inverter

4 days ago · Learn how to transform a 3.7V battery to power a 220V device with this step-by-step mini inverter tutorial. Discover the essential components and techniques needed to build this useful DIY project

### Home Energy Storage (Stackable system)

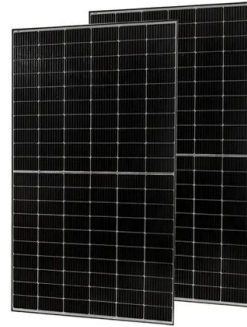


## How to Calculate the Right Inverter Size for Your Power Needs

An inverter that is too small may not meet your equipment's needs, while an oversized inverter could lead to unnecessary costs. This article provides a step-by-step guide to help you ...

## What Inverter Size is Best for a 100Ah Battery?

When setting up a solar, off-grid, or backup power system, understanding the compatibility between your battery size and inverter capacity is essential for both performance and safety. A ...



## Contact Us

---

For catalog requests, pricing, or partnerships, please visit:  
<https://chrisnell.co.za>